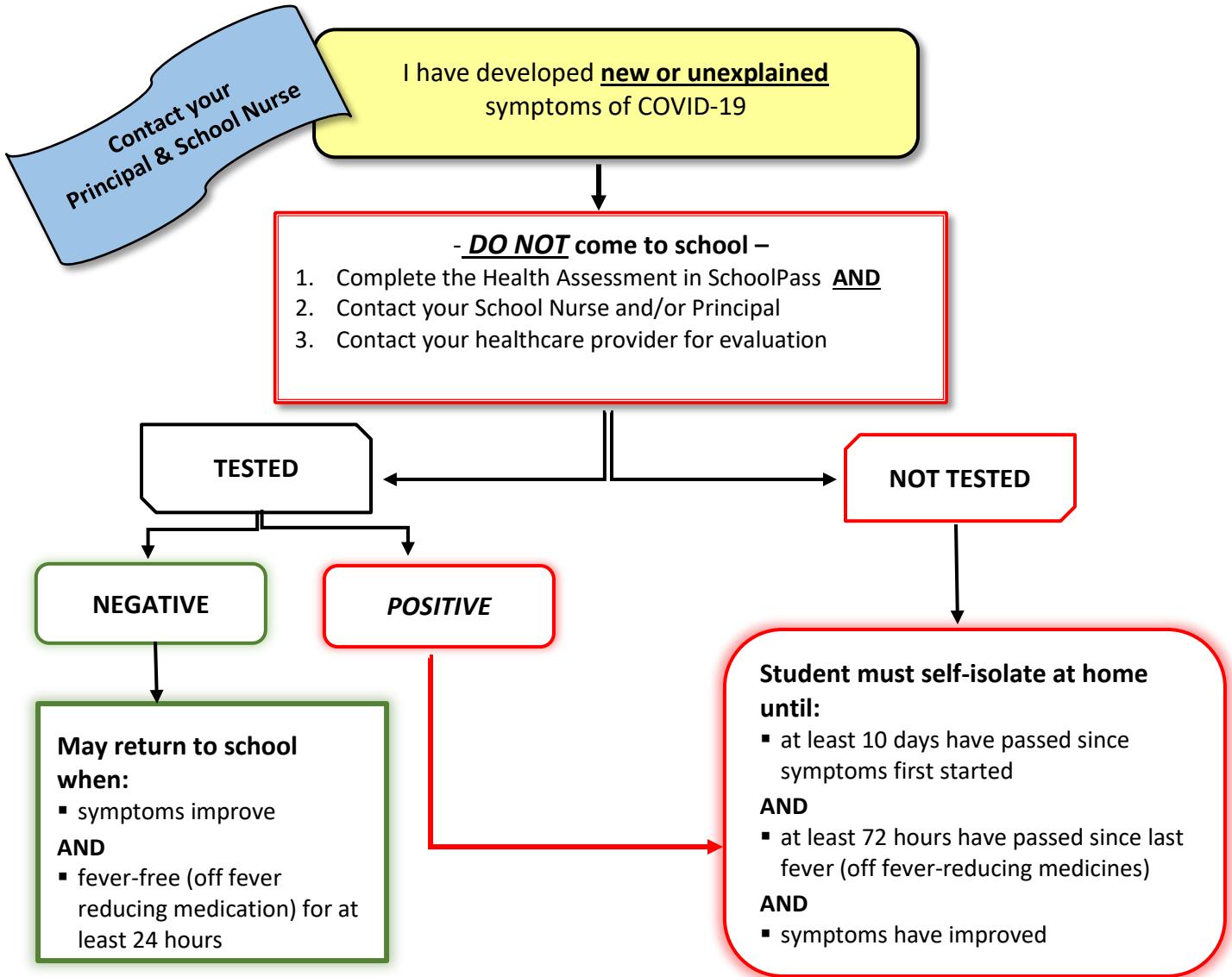


# COVID-19 SCREENING GUIDANCE

## FOR INTER-LAKES SCHOOL DISTRICT STUDENTS



### PLEASE NOTE:

**IN ALL CASES, PRIOR TO RETURNING TO SCHOOL, CONSULT WITH THE NURSE'S OFFICE for NEXT STEPS TO RETURN TO SCHOOL.**

**SELF-QUARANTINE:** Applies to people who were in close contact with someone sick with COVID-19, or returning to NH from travel (outside of New England).

**SELF-ISOLATION:** Applies to people who are sick with COVID-19 or tested positive for COVID-19 but did not have any symptoms.

#### APPROVED COVID-19 TEST:

- A PCR-based molecular test
- Antigen-based testing conducted within 5 days of symptom onset

#### AVAILABLE TESTING SITES:

- Midstate Health Center, Plymouth NH 603-536-4000
- Convenient MD Urgent Care, Belmont NH 603-737-0550
- Speare Memorial Hospital, Plymouth NH <https://spearehospital.com/>
- Primary Care Physician's Office