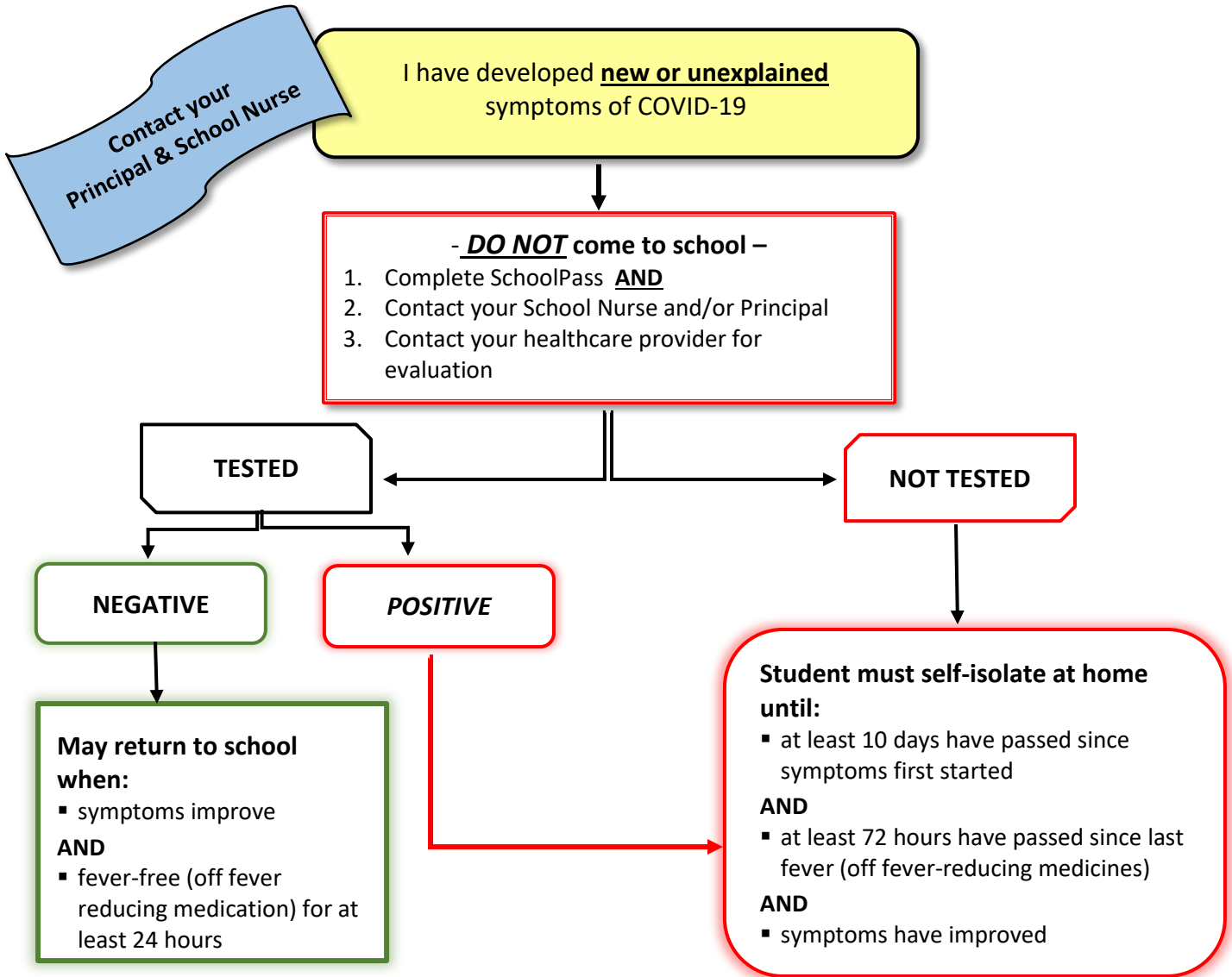


COVID-19 SCREENING GUIDANCE

FOR INTER-LAKES SCHOOL DISTRICT STUDENTS



PLEASE NOTE:

IN ALL CASES, PRIOR TO RETURNING TO SCHOOL, CONSULT WITH THE NURSE'S OFFICE for NEXT STEPS TO RETURN TO SCHOOL.

SELF-QUARANTINE: Applies to people who were in close contact with someone sick with COVID-19, or returning to NH from travel (outside of New England).

SELF-ISOLATION: Applies to people who are sick with COVID-19 or tested positive for COVID-19 but did not have any symptoms.

APPROVED COVID-19 TEST:

- A PCR-based molecular test
- Quidel Sofia antigen testing ins conducted within 5 days of symptom onset

QUIDEL SOFIA AVAILABLE TESTING SITES:

- Midstate Health Center, Plymouth NH 603-536-4000
- Convenient MD Urgent Care, Belmont NH 603-737-0550